

FOR LEASE



959 Las Tablas Rd. Suite A4 - Templeton, CA 93465

North County Professional Plaza



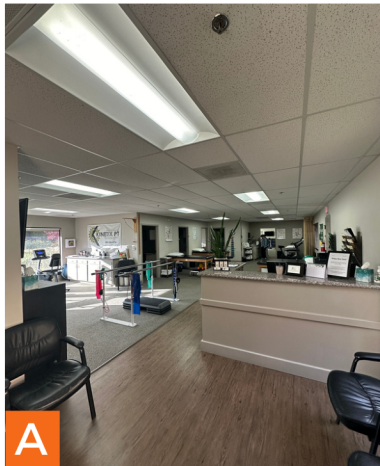
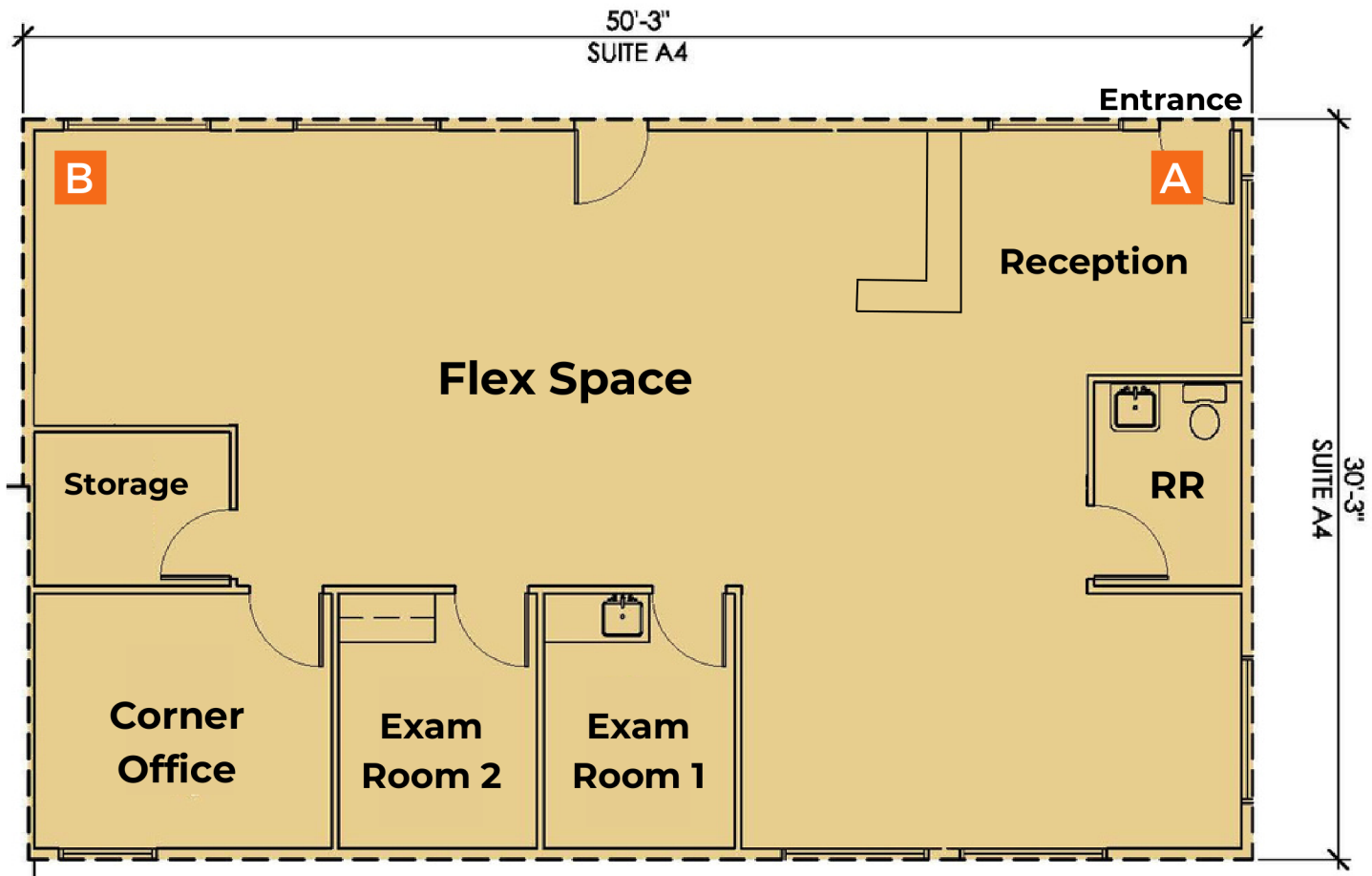
Key Property Features:

- **Size - 1,517 sq.ft.**
- **Rent: \$2.10/Sq.Ft. - NNN (0.62/SF)**
- Medical / Dental / Professional office complex
- Prime location - First property off 101 freeway exits
- Abundant parking space
- Outdoor landscaped courtyard space
- Modern interior

805 - 544 - 2400 | info@RSPaulcompany.com | www.rspaulcompany.com

RSPaul Company Lic. #01979685

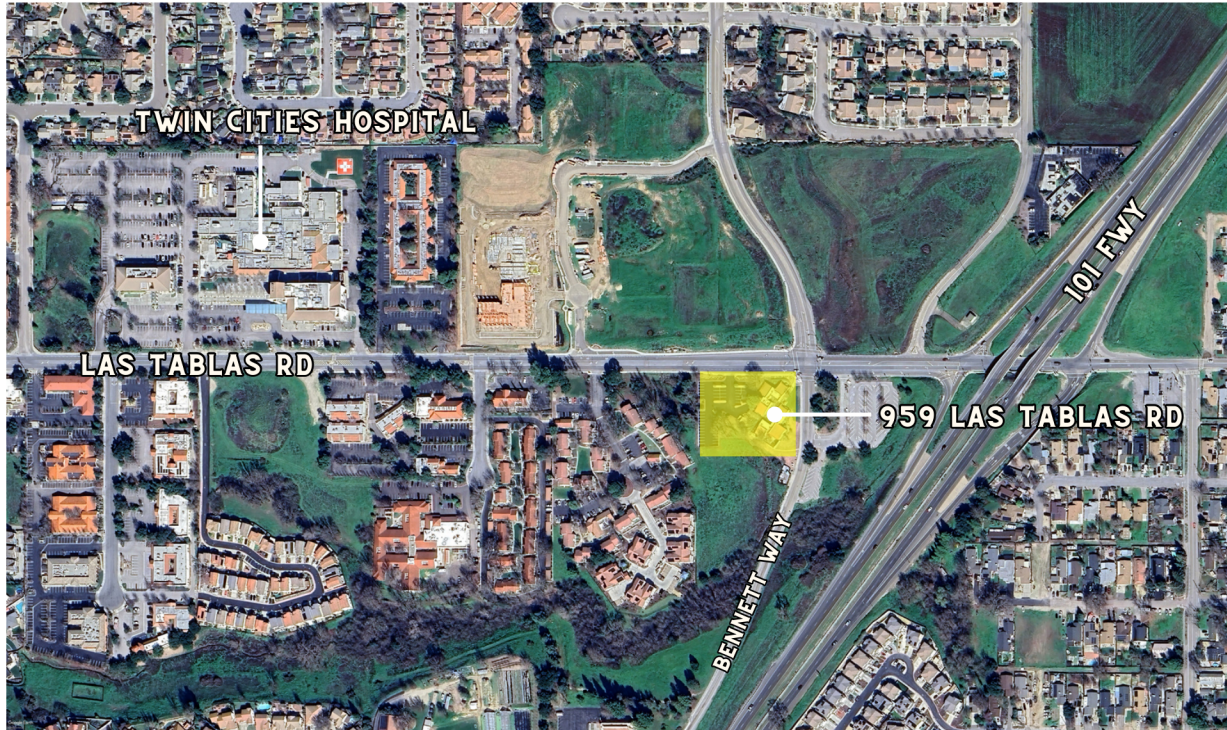
Floor Plans



Suite A4 Details:

- Large Common Area / Flex Space
- 2 Exam Rooms
- Corner Office

Location Guide



Location Details

- Easy access and visibility to/from US Hwy 101
- Twin Cities Hospital only 0.3 miles west along Las Tablas Rd
- Spacious tenant and customer parking
- Close proximity to Paso Robles and San Luis Obispo

RSP RSPaul Company, Inc.

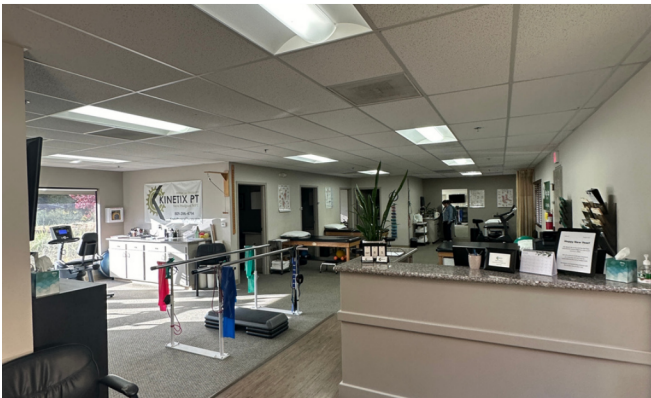
Photo Gallery



Ample Parking



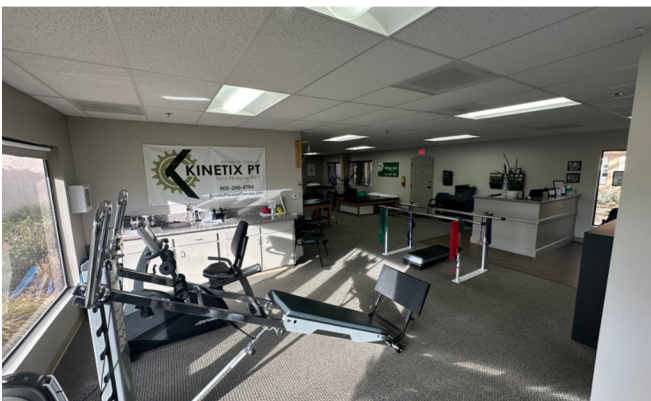
Outdoor Patio



Reception



Exam Rooms / Offices



Flex Space



Exam Room