

FOR LEASE



3980 Steel Way

San Luis Obispo, CA

New 10,688 SqFt Solar-Powered Building Available 2025



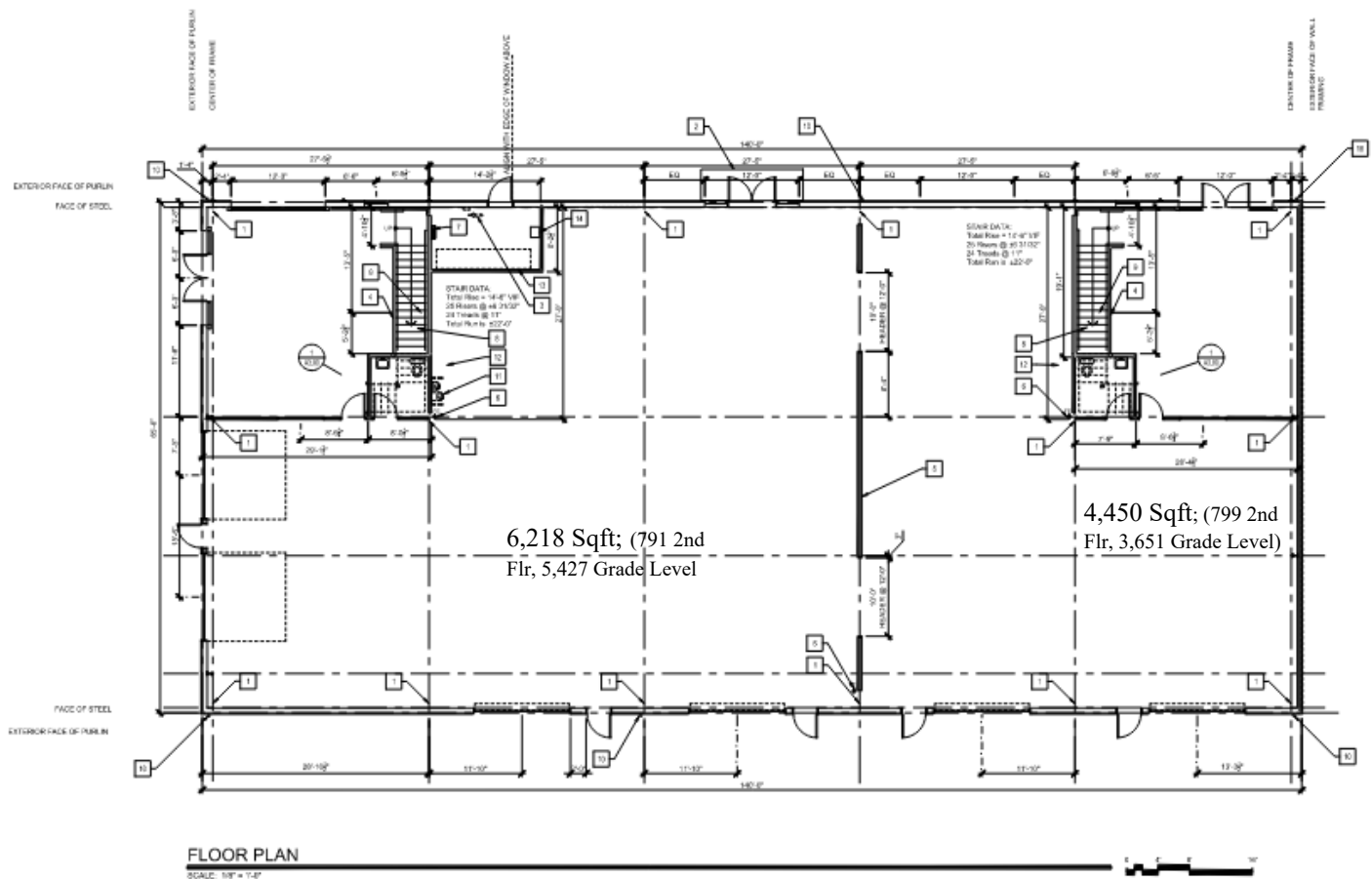
Rendering at Main Entry



Building Pad ready for footings

Key Property Features

- Solar-Powered (46,000 kWh; 3 systems); 10% lower electricity bill
- 1 dual Electrical Vehicle Charger
- Zoning: CS – Commercial Service
- Size: 2,250 SqFt to Full Building (10,668 total)
- 10x14 Ft high Roll Up Doors (4 total)
- Part of the new Tank Farm Commerce Park at Steel Way
- Easy Access to/from the 101 Freeway
- High Volume Warehouse Space (24 ft+)
- Mixed Use and Warehouse
- Power- 1,000 amp/208v/3ph; 5-meter slots
- Price: Call, \$TBD/SqFt, \$.50, NNN, \$.13 Solar fee



RSP RSPaul Company, Inc.

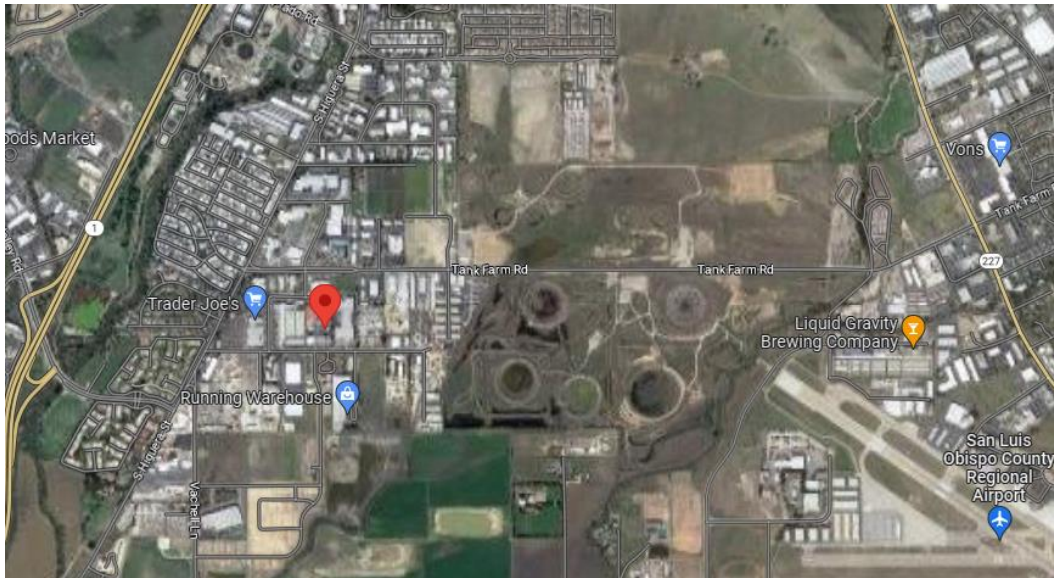


Rendering of Warehouse Entry



Building Pad with parking lot installed

RSP RSPaul Company, Inc.



Info@RSPaulcompany.com

805-544-2400

1432 Higuera Street, San Luis Obispo CA 93401

Visit Our Website for More Information- www.RSPaulCompany.com.